

Box 1: Robson classification

Group 1



Nulliparous with single cephalic pregnancy, ≥ 37 weeks gestation in spontaneous labour

Group 6



All nulliparous women with a single breech pregnancy

Group 2



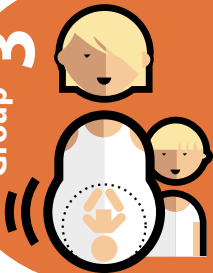
Nulliparous with single cephalic pregnancy, ≥ 37 weeks gestation who either had labour induced or were delivered by caesarean section before labour

Group 7



All multiparous women with a single breech pregnancy, including women with previous uterine scars

Group 3



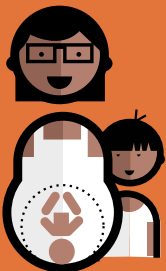
Multiparous without a previous uterine scar, with single cephalic pregnancy, ≥ 37 weeks gestation in spontaneous labour

Group 8



All women with multiple pregnancies, including women with previous uterine scars

Group 4



Multiparous without a previous uterine scar, with single cephalic pregnancy, ≥ 37 weeks gestation who either had labour induced or were delivered by caesarean section before labour

Group 9



All women with a single pregnancy with a transverse or oblique lie, including women with previous uterine scars

Group 5



All multiparous with at least one previous uterine scar, with single cephalic pregnancy, ≥ 37 weeks gestation

Group 10



All women with a single cephalic pregnancy < 37 weeks gestation, including women with previous scars



Previous caesarean section



Spontaneous labour